

EDV-X 1-1 SPARE KIT - AS027

PARTS LIST		
ITEM	QTY	DESCRIPTION
1	1	O-RING (20.58 X 2.64)
2	2	CO030 CUP WASHER
3	1	AD554 STRAINER Y
4	1	O-RING (19.5 X 3.0)
5	1	PLUNGER REGULAR
6	1	SPRING COMPRESSION
7	1	O-RING TOP FOR ASSY

EDV-X 1-1 CONTROLLER SPARE KIT			
ITEM	QTY	PAR NUMBER	DESCRIPTION
8	1	AD1627	TIMER WITH COIL EDV-X 1-1

#### STANDARD LIMITED WARRANTY

Products of Trident Pneumatics Pvt Ltd are warranted for a period of 1 year from the date of supply to be free from defects in material and workmanship and operated in accordance to the instructions outlined in the Installation manual.

Trident Pneumatics obligation under the warranty shall be limited to repair or replace (at the discretion of Trident). Please send material freight paid to the dealer from whom purchased, with a copy of purchase invoice.

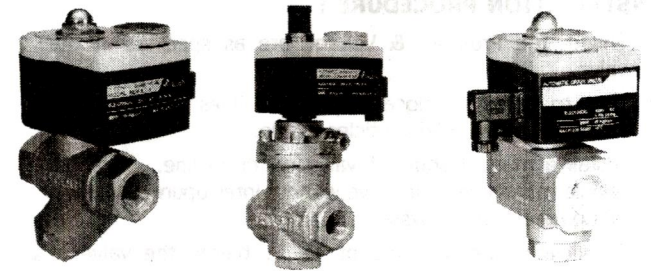
#### Trident Pneumatics Pvt Ltd

5/232, K.N.G. Pudur Road, Coimbatore - 641 108, India.

Ph : +91-422-2400492, 2401373

e-mail : sales@tridentpneumatics.com

Website : www.tridentpneumatics.com



## MANUAL

### Automatic Drain Valves - EDV-X / EDV-X HD / SS 40

#### ⚠ WARNING

1. Valve discharges under pressure stay away from discharge path.
2. Install & remove only after depressurised and electrically disconnected.

To ensure proper performance of your Trident Drain Valve, proper selection is needed. Please verify your model before reading this manual. Automatic drain valves are designed for installation on equipment requiring regular draining of accumulated fluids in compressed air. The valves are opened on a timed cycle, 1 to 120 min. A Bi-colour LED indicator glows RED when energised and GREEN when draining.

**INSTALLATION PROCEDURE :**

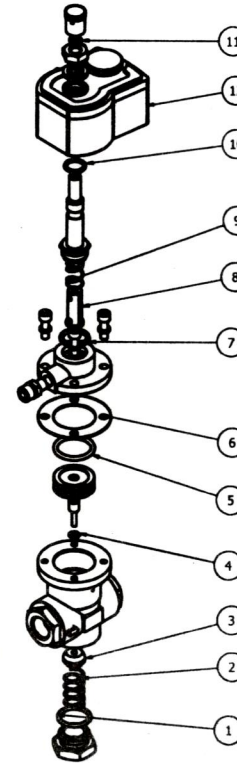
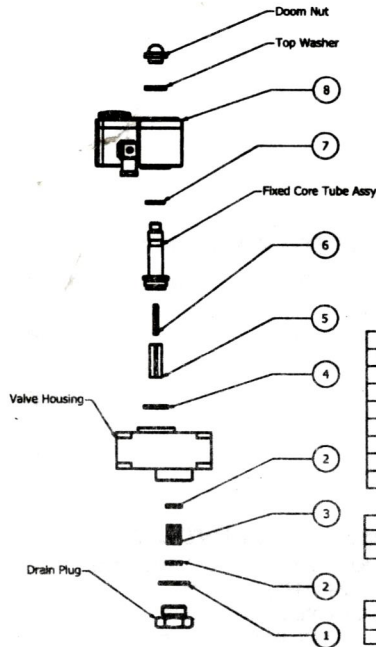
1. Ensure the Pressure & Voltage are as specified in the valve.
2. Prior to installing, close all pressure lines to vessel and blow down the solid particles inside.
3. Install a manual shut off valve on drain line. This will enable to remove drain valve without interrupting operation of Compressed air system.
4. Install a Strainer e.g Trident TS 11 before the valve, if contamination is high.
5. Install valve, referring manual / flow direction indication on valve body. Before installing apply proper thread sealant.
6. Connect to the electrical source through a fused outlet.
7. Open shut off valve and switch on power supply to operate drain valve.

**MAINTENANCE :**

- For all models : Check valve operation periodically.
- For Series EDV / SS40 : Clean Strainer if needed once in 3 months.
- For EDV - HD : Maintain minimum pilot pressure - 4 kg/cm<sup>2</sup>

**SPECIFICATION :**  
(General for all models)

- End connection : 1/2" BSP (F)  
 Power cable : DIN with appliance connector DIN 43650 micro  
 Ambient operating : upto 100% RH  
 Pilot pressure : 4 kg/cm<sup>2</sup> (min) only for EDV HD  
 Max. Fluid Temp : 75°C



EDV-X 1-3, SS 40 SPARE KIT - AS032

PARTS LIST		
ITEM	QTY	PART NUMBER
1	1	O-RING (20.58 x 2.64)
2	2	CUP WASHER
3	1	STRAINER T
4	1	O-RING (19.5 X 3.0)
5	1	PLUNGER REGULAR
6	1	SPRING COMPRESSION EDV x 4
7	1	O-RING TOP FOR ASSY

EDV-X 1-3 CONTROLLER SPARE KIT			
ITEM	QTY	PART NUMBER	DESCRIPTION
8	1	AD1629	TIMER WITH COIL EDV-X 1-3

EDV-X - SS 40 CONTROLLER SPARE KIT			
ITEM	QTY	PART NUMBER	DESCRIPTION
8	1	AD1644	TIMER WITH COIL EDV-X - SS 40

EDV-X - HD 1-1 SPARE KIT - AS005

PARTS LIST		
ITEM	QTY	DESCRIPTION
1	1	O-Ring (23.2 X 3.0)
2	1	Spring Comp. 1/2" HD
3	1	Poppet Moulded
4	1	O-Ring (4.4 X 2.4)
5	1	O-Ring (28.17 X 3.53)
6	1	Gasket 1/2" HD
7	1	O-Ring (19.5 X 3.0)
8	1	Plunger Assy HD
9	1	Plunger Spring
10	1	O-Ring (14 x 2.4)
11	1	O-Ring (6.5 X 2.0)

EDV-X HD 1-1 CONTROLLER SPARE KIT			
ITEM	QTY	PART NUMBER	DESCRIPTION
12	1	AD1625	TIMER WITH COIL EDV-X HD 1-1